

Full music

205D Vacuum Tube

Classification-Ball-type and Globe type bulb of glass, a four-prong bayonet pin tube, oxide coated filamentary triode.

Application- Audio amplifier Class A Service, Radio amplifier Class B Service, Oscillator Class C Service.

Dimensions-Dimensions, outline diagrams of the tube and bases, and the arrangement of electrode connections to the base terminals are shown in Figures 1 and 2.

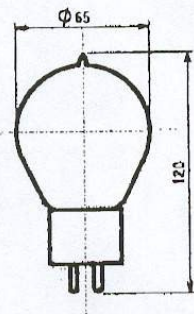


Fig.1

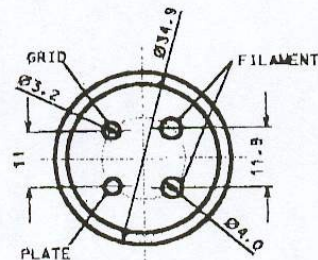


Fig.2

Nominal operating conditions and parameters

Filament voltage.....	4.5 V*
Nominal filament current.....	1.2 A
Plate voltage.....	300 V
Grid voltage.....	-24 V
Plate current.....	15 mA
Plate resistance.....	5 kohms
Amplification factor.....	7.3

* Alternating-current filament supply or Direct-current filament supply. Alternating-current filament supply is used. The grid and plate returns should be connected to a center tap on the secondary of the filament transformer. Direct-current filament supply is used. The grid and plate returns are connected to the negative end of the filament.

Characteristics-Average characteristics

Figure 3 shown typical curves of plate currents as a function of grid voltage for several values of plate voltages.

Full music

Maximum plate voltage 400 volts
 Maximum plate dissipation 14 watts
 Maximum plate current 50 mA

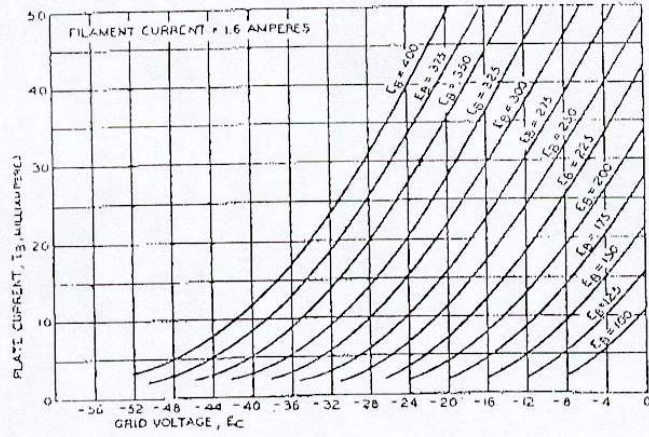


Fig. 3